



MOSMAN ART SOCIETY

Fostering the development, practice and love of art throughout the community

Newsletter Issue 192 May 2024

Apologies for the delayed arrival of the Newsletter. The Editor went walkabout to Europe. The Secretary went to Peru. March and April are gone and now we're in May, heading for June and playing catch up.

Vale Max Coleman

It was with great sadness that we learnt of the recent death of Max Coleman, a loyal friend and enthusiastic member of Mosman Art Society.

"Dr Max Coleman practised as a highly talented surgeon before his retirement, after which he took up his interest in art and began to support the Mosman Art Society," writes Rosemary Christmas who, with her husband Gerald, knew him well.

"Max was a much-valued member of the Mosman Art Society and contributed as a committee member and expert Treasurer for many years during the time Gerald was President. He participated in exhibitions with his talented beautiful watercolours and was very keen on painting *en plein air*, participating in many local get-togethers. As his wife said, 'He loved to live life to the full'.

"Max was developing Parkinson's for the last 20 years, but that did not stop him from such valuable contributions as establishing a website and system for payments and a members' list with his considerable computing skills. He was a generous helper as a volunteer computer assistant and teacher. His wife Sandra provided company and his most valued means of transport when he was no longer able to drive from their home at Roseville.

"During his later retirement years he also spent nine years researching the early history of medicine and doctors for his book, *A surgical History of St Vincents Hospital Sydney 1857-2007*, which was published to acclaim in 2018.

"His funeral was at Lindfield Killara church on 27 March with over 300 attending, attesting to his professional achievements and his generous, thoughtful and caring contributions to so many. Mosman Art Society members certainly benefited greatly by his presence and contributions to its development and to his friendship."



Max Coleman in 2014

RETURN TO MOSMAN ROWERS

Think minimal. We're back at **Mosman Rowers, 6-16 August**, with **The Small Work Art Show**.

Pictures must be no larger than 40cm x 40cm. Sad news, we know, for those who like room to splash out and for 3D artists, but, although the venue is beautiful, space will be tight and this is the best way to exhibit as much of your work as possible. Also, let it be whispered, often the best way to sell.

Submissions due **Friday 26 July**, and receipting day is **Monday 5 August**. More info to follow.

And...

MAS members featured in the recent 2024 Art@The Rowers Acquisitive Exhibition. Congratulations to **David Wiggs** who won Second Prize for his oil painting, *Comings and Goings – Over Burnt Banksia*.

Mosman Art Trail

Stand in Reid Park, Mosman Bay, and see the scene as it looked when Margaret Preston painted it in 1925, nearly a century ago. Or Balmoral Beach through the eyes of Ethel Carrick Fox as she worked *en plein air* in 1913 near today's Boathouse.

The newly opened Mosman Art Trail is a unique 10km cultural walk from Mosman Bay to Beauty Point, linked to the Bondi to Manly coast walk. At 12 specific sites along the route, illustrated signage features a high-quality reproduction of a work from the Mosman Art Gallery Collection and the Balnaves Gift that incorporates the scene before you.

On George's Heights, for instance, you'll find Arthur Streeton's view of Sydney Harbour in 1895, or further along the path Jasper Knight's image of Spit Bridge Tower from 2015. And thanks to a QR code on each sign you can hear actor Claudia Karvan explain the history of the work.

Armchair walkers can check out the pictures and the audio on Mosman Art Gallery's website (mosmanartgallery.org.au), or you can visit the actual works in the Gallery.

Pictured below: Lindie Treleaven and Anne Woodham with signage for Susan Rothwell's Balmoral Shark Net (2008) at a wet and windy opening of Mosman Art Trail on 30 April.



It's Archie time again

The year's most celebrated – and often most controversial - portrait prize opens at the Art Gallery of New South Wales on 8 June, until 8 September.

And once again what better way to view the finalists than with your friends at Mosman Art Society on a **private out-of-hours tour** led by Annabel Baxter, one of the Gallery's top Archie guides.

The date is **Tuesday 2 July, at 9.30am**, so ahead of the rush. Tickets are \$27 per person (concession rate) at <https://www.trybooking.com/CRUCK>



2023 Archie winner Julia Gutman (AGNSW)

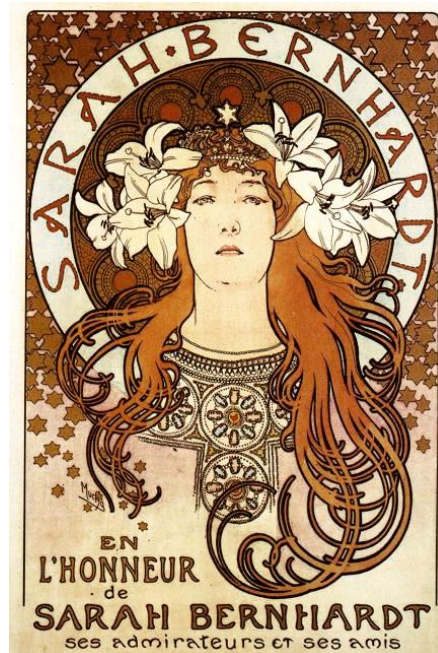
The spirit of Art Nouveau

You'll have seen his posters in a thousand reproductions. Many adorned a youthful wall in the psychedelic '60s. Once hailed as the 'greatest decorative artist in the world', **Alphonse Mucha** rocketed to fame with posters he created for legendary superstar Sarah Bernhardt (see below). His seductive compositions and designs defined the Art Nouveau movement in late 19th century Paris and have lingered in the zeitgeist ever since.

Lesser known is his lifelong commitment to the Slavic peoples and the independence of his homeland in today's Czech Republic. The artist's extraordinary story and range of work features in **Alphonse Mucha – Spirit of Art Nouveau**, which opens at the **Art Gallery of New South Wales** on 15 June until 22 September.

Mosman Art Society members and friends can enjoy an **out-of-hours private tour** of the exhibition in the North Building (Naala Badu) on **Wednesday 24 July at 9.30am**. Your guide will be Society President, Anne Woodham.

Tickets are \$35 per person (concession rate) at <https://www.trybooking.com/CRUDA>



Seasons at Mosman Art Gallery

Members made the most of a glorious opportunity to show their work at our biennial exhibition at Mosman Art Gallery (23 February – 24 March). We had 88 submissions and all were displayed, which given the diversity of artwork – paintings, drawings, photographs, prints and sculpture that carried the *Seasons* theme to its broadest interpretation – was a curatorial wonder.



Kate Rae with Seasoned Salty, her portrait of Anthony Coleman



Summertime at Little Henry's by Michael Braden



Mosman Mayor Carolyn Corrigan opens Mosman Art Society's Seasons along with an exhibition of the Mosman Art Gallery Collection on 22 February.

Annual General Meeting

The AGM was held in the Melody Room, Mosman Art Gallery, before the opening of *Seasons* on Thursday 22 February. There were 26 attendees and four apologies. The President's and the Treasurer's Reports were accepted and the Society declared in buoyant health.

We are very sorry to lose Isabel Gaven and Linda Gold from the Committee as both have made excellent contributions. Isabel has been instrumental in designing the Newsletter and MAS publicity. We welcomed new Committee members Jan Riley and Sarah Austin.

Minutes of the AGM were emailed to MAS members on 26 March.

MAS turns 30 next year

...and we're planning a celebration. A gala party in February 2025 at Mosman Art Gallery to follow the Annual General Meeting and to honour those dedicated members who have been with the Society from early days. There'll be music and merriment, speeches (of course) ... and cake! Watch this space.

ART AWARDS

Northern Beaches Environmental Art & Design Prize

LAST CHANCE to showcase your sustainable art or design in the \$46,000 prize pool and inspire real-world change. Entries close **Sunday 19 May**.

Judges include fashion designer Genevieve Smart, industrial designer Trent Jansen and visual artist Khaled Sabsabi. Applications at northernbeaches.nsw.gov.au.

Jacaranda Acquisitive Drawing Award (JADA)

The award seeks to encourage and promote innovation and excellence in drawing with an acquisitive prize of \$35,000. Entries close midnight **30 June 2024**. Finalists' exhibition at Grafton Regional Gallery 28 September to 24 November. Further information graftongallery.nsw.gov.au

Frenchy's Second Tuesdays

Coffee, arty conversation, show and tell and maybe some sketching, every second Tuesday of the month, 10am at Frenchy's Café, Headland Park, Mosman.

Look for the table with the pot plant. Upcoming dates: 14 May, 11 June, 9 July, 13 August.

Mosman Youth Art Prize

This year's winner of **Mosman Art Society's encouragement award** in the Mosman Youth Art Prize at Mosman Art Gallery is **Stella Janssens** for her work, *The Imposter* (pictured below).

Every year the Society contributes \$500 to this award, shared with ArtSmart Art Store and Picture Framing. Hundreds of budding artists from juniors to tertiary students entered drawings, paintings, photographs, videos, prints, sculpture and ceramics in the annual Prize, founded in 1988 by local artist Ken Done to foster the next generation of artists.

MAS Vice President Margaret Crane and Committee Member Kate Rae judged the Society's award. "We both agreed that Stella's sculpture and statement deserved encouragement," says Kate. "Her work attempts to touch on a spectrum of concerns relevant to today's youth." Stella was very appreciative of the Society's support towards her future as a sculptor.

According to her artist statement, "...the somewhat crude juxtaposition between the delicate hand-sculpted and painted porcelain and the brutality of the recycled steel... is reminiscent of the duality within the human soul... calling to the ugly and the beautiful which makes us who we are..."



Social Media

Add your artwork and bio info to the Artists' Gallery on the MAS website
www.mosmanartsociety.org.au
Visit us on Instagram @mosmanartsocietyinc.
Contact secretary@mosmanartsociety.org.au to come on board.

A Warm Welcome to Our New Members

Karina Barnard
Rachel Cofrancesco
Patricia Dibbs
Masako Gordon
Hilary Hannam
Megan Jones
Gail Kennedy
Sang Hee Kim
Sandra Little
Duncan Mcallan
Charmian Porter
Linda Seve
Paolo Tavuzzi

En Plein Air

Led by Jonathan Falk, the group meets twice a month from 10am to around 12pm. Just turn up!

Thursday 23 May

Cremorne Reserve (west side), Cremorne Point

Tuesday 4 and Thursday 20 June

Balmoral Beach (Rotunda)

Tuesday 2 and Thursday 18 July

The Spit (east side)

Tuesday 6 and Thursday 22 August

Clifton Gardens, Chowder Bay



MAS COMMITTEE

Patron: Paul Delprat

President: Anne Woodham

Vice-President: Margaret Crane

Secretary/Treasurer: Lindie Treleaven

Committee Members:

Sarah Austin

Frances (Shar) Jones

Kate Rae

Jan Riley

Mosman Art Society

PO Box 343, Spit Junction, NSW 2088

secretary@mosmanartsociety.org.au

www.mosmanartsociety.org.au

Newsletter Editor: Anne Woodham