

# MOSMAN ART SOCIETY

Fostering the development, practice and love of art in the community



## Newsletter Issue 190 November 2023

Editor: Anne Woodham

Designer: Isabel Gaven

### Kandinsky! Bourgeois!

Join a Mosman Art Society private tour for this summer's blockbusters at the Art Gallery of NSW

A little-known fact. **Vasily Kandinsky** was a law school lecturer who, while watching a production of Wagner's *Lohengrin* in Moscow, saw 'colours before my eyes.' Already a keen amateur artist, he was determined to make a painting as emotional and epic as the opera.

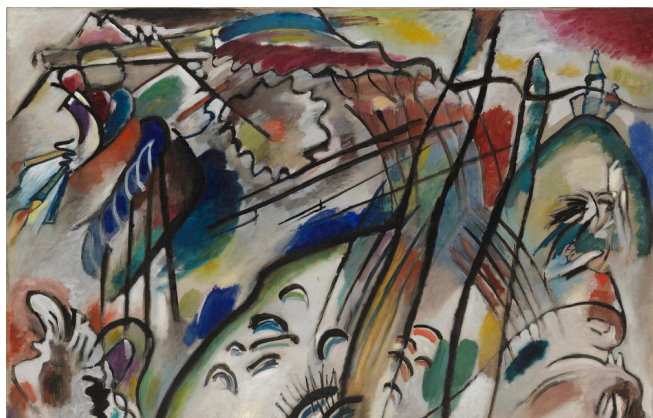
The rest is history. He became one of the great innovators of European abstraction in the early 20th century, stressing the parallels between painting and music as pathways to a spiritual reality.

"Colour is a power which directly influences the soul," he wrote in his treatise, *On the Spiritual in Art*.

"Colour is the keyboard, the eyes are the hammers, the soul is the piano with many strings. The artist is the hand that plays, touching one key or another, to cause vibrations in the soul."

*Kandinsky*, a comprehensive exhibition of the artist's work curated with the Guggenheim Museum in New York, opens at the Art Gallery of NSW, 4 November until 10 March.

This will be a popular show. Avoid the crowd and join our Mosman Art Society (MAS) members for **a private out-of-hours guided tour on Wednesday 20 December at 9.30am.**



*Kandinsky, Improvisation 28 (second version) 1912*



*Louise Bourgeois, Maman at Tate Modern, London, 2000*

**Louise Bourgeois'** towering bronze spider *Maman*, on the forecourt of the Art Gallery of NSW this summer, welcomes visitors to *Louise Bourgeois: Has the Day Invaded the Night or Has the Night Invaded the Day?* (25 November to 28 April). This is a landmark exhibition celebrating one of the most influential and important artists of the 20th century.

Bourgeois is renowned for her emotionally powerful artworks. Born in Paris in 1911 and living and working in New York until her death in 2010, she fearlessly explored human relationships across a relentlessly inventive seven-decade career.

The exhibition, among the most extensive dedicated to an international woman artist in Australia, will occupy two levels of the North Building: 'Day' above, and 'Night' in the dramatic space of the Tank below.

**Join a private out-of-hours tour on Thursday 11 January at 9.30am**, led by MAS President Anne Woodham, an Art Gallery of NSW volunteer guide.

**Tickets for either Kandinsky or Bourgeois tours are \$33 per person, a special members' rate. Numbers are limited, so don't delay.**

**To book one, or both of these blockbuster tours:  
Contact: [secretary@mosmanartsociety.org.au](mailto:secretary@mosmanartsociety.org.au)**



Gerald Christmas, *Beach Frolics*

## A Christmas for Christmas

Two artists living under the same roof, with very different practices, and now a shared exhibition. Gerald and Rosemary Christmas, long-standing and much-loved members of Mosman Art Society, celebrate a unique artistic partnership at the Bathers' Pavilion, The Esplanade, Balmoral, this summer.

Gerald took up art with a vengeance when he retired from his law practice at 60. He was involved with the Mosman Art Society from its inception, Vice President for six years and then President for ten years until 2015. Encouraged by Rosemary, his style evolved from traditional landscapes to naïve figuration.

His *Balmorality* series is legendary. From their home a stone's throw from the beach, he enthusiastically captured Balmoral life – the pavilion, the Rotunda, the rocks, the island, the weddings, the square men, the curvy girls, the swimmers, the sunbakers... all of it, in riotous colour and action.

"Gerald brings to the antics of the human race a delightful mixture of wry humour, tinged with a sharp observing eye," said acclaimed artist Ruth Faerber when she opened his first solo show at the Artarmon Galleries, 2013. How true.

## MAS Christmas Party and Pop-Up Art Show

**Saturday 9 December, 4pm to 6.30pm**  
**Grand Hall, Mosman Art Gallery**

Celebrate with arty colleagues. We'd love you to bring an original artwork on paper, no larger than A5, for a festive notice-board display. The deal is that you take home someone else's picture but not your own. Refreshments provided and 'plus ones' are welcome.

**RSVP by Wednesday 6 December to**  
**secretary@mosmanartsociety.org.au**

Rosemary's practice, on the other hand, is subtle and nuanced. Her innate aptitude was on hold during university and childrearing, but over the years she studied artmaking through the National Art School, the Julian Ashton School, Warringah Printmakers Studio, Australian Chinese Art Society, various summer schools, Willoughby Arts Centre workshops, and papermaking at Primrose Park Arts Centre.

It was at a Mosman Evening College sketching class in 1995 that she and three other students hatched the idea of a Mosman Art Society. Aided by Gerald and others, including Bryan Besly, it came to fruition. Rosemary is now an Honorary Life Member of MAS.

The extraordinary landscapes and overwhelming night skies she witnessed at outback artist camps were inspirational. During a month as an Indigenous community volunteer, she marvelled at the Aboriginal artists' "creativity and precision and concentration."

Rosemary's stunning breadth and diversity of medium, technique and genre, including acrylic, oil, watercolour, Chinese brushstroke, printmaking, calligraphy and handmade paper are all on display. "My artist life is born from a sense of wonder and discovery of things in the natural world," she says. "To explore beneath the surface; the shape, colour, line; and, through the simplicity of the zen circle, awareness of the present moment."

**Opening night is Monday 6 November at 6pm.**  
**The exhibition runs to 28 December in the**  
**Bathers' Pavilion Upstairs Gallery.**  
**RSVP to Rob.Davis@batherspavilion.com.au**  
**or phone 9969 5050.**



Rosemary Christmas, *Leaf Friends*



## How to Grow Your Art Practice



**We promised a game changer, which is exactly what many of those attending Paul McDonald's workshop declared it to be.**

Paul, a curator, educator and artist, lectures on professional arts practice at the National Art School, Sydney, where his courses are open to non-students, and mentors numerous artists.

Participants at our fully-subscribed event in Mosman Art Gallery's Melody Room on 24 September ranged from established artists to those taking their first steps. Paul's message for everyone: begin with a good hard think about the kind of art you make, the sort of artist you are and the artist you want to be. Each of us was asked to summarise our work in a sentence. Try it.

Paul's own practice is photography and he sets aside one day a week to develop ideas. Play (walking, thinking, doodling) is a vital engine of creativity. But realising an idea demands research and testing, especially if you're serious about marketing yourself to a wider public.

Look at what's selling and where. Visit exhibitions at commercial galleries, from those in the local high street to highflyers such as Roslyn Oxley9 in Paddington. Attend openings if you can, investigate gallerists, dealers, curators. Which ones reflect your medium and presentation? Go to art events and talks. Any committed artist should check out major art fairs like Sydney Contemporary at Carriageworks, or follow the art media; Art Guide Australia, ArtsHub, Artsy, *Artist Profile* magazine, and more...

What do you want audiences to think, do, feel, when viewing your work, asks Paul. Do you want to challenge them, or buy your work, or do something else? Are you aiming for a solo show or can you find like-minded artists for a group exhibition? Do you have a complete cohesive body of work ready? Can you create new work on a regular basis or to a schedule? Are you on social media? How much would you like to earn annually?

Finally, and it's a question only you can answer, do you have the time, and the appetite, for all this?

## SEASONS

### At Mosman Art Gallery

**The title of our next biennial exhibition at Mosman Art Gallery is *Seasons*. It offers infinite scope for interpretation, whatever your medium. Not only the turning of the year, but time and taste too.**

**The exhibition opens 21 February and runs until 24 March 2024.**

**The submission deadline is 9 February 2024 and artworks are limited to 1 metre x 1 metre. Sculptures may be submitted but installations are excluded.**

**More details and online submission forms to follow, but this is a heads-up to exhibiting members to start creating.**

## MAS Annual General Meeting

**Due to reporting requirements of the Australian Charities and Not-For-Profits Commission, we must complete our financial year to 31 December 2023 prior to holding the Annual General Meeting.**

**As a result, the AGM will not be held on the same day as the Christmas party, but after January 2024 (date to be confirmed) in the Melody Room, Mosman Art Gallery.**

## WHAT'S ON

### North Sydney Art Prize

Major biennial art event showcasing the best in contemporary art by emerging, mid-career and established artists across Australia. Exhibition in The Coal Loader Centre for Sustainability, Waverton, 11 May to 2 June 2024. Entries close 30 November 2023. Finalists announced 19 January. All mediums including 2D, 3D, installation and site-specific work welcome. [www.northsydney.gov.au](http://www.northsydney.gov.au)

### Perry Prize for Drawing 2024

\$25,000 acquisitive prize awarded to the winning work chosen by 2024 judge, Emeritus Professor Sasha Grishin AM, art historian, art critic and curator. Entries close 10 January 2024.

Details [www.apg.plc.nsw.edu.au](http://www.apg.plc.nsw.edu.au)

Inaugurated in 2006 and attracting submissions from around Australia, the Prize is named in honour of respected painter, printmaker and draughtswoman, Adelaide Elizabeth Perry (1891-1973), who taught Visual Arts at PLC Croydon from 1930 to 1962. You can see one of her works, *Taronga Wharf 1939*, in the Balnaves Gift at Mosman Art Gallery.

### Harden Art Prize

\$10,000 acquisitive prize for landscape paintings, now in its third year. Entries close 16 February 2024. Exhibition opening night 5 April, Old Courthouse, Albury Street, Murrumburrah. [www.hardenartprize.org](http://www.hardenartprize.org)

### Art@TheRowers 2024

Acquisitive art exhibition and sale. Competition judge is artist Tim Storrier. Prizes total \$4,500 for 2D images featuring Port Jackson. Entries close 2 February 2024. [www.mosmanrowers.com.au/whats-on](http://www.mosmanrowers.com.au/whats-on)  
Facebook @mosmanrowers

### Exhibition: *Tacita Dean*

Museum of Contemporary Art, Sydney  
8 December to 3 March 2024

British-born artist world-renowned for her distinctive works encompassing film, photography, sound, installation, drawing, printmaking and collage. This largest presentation of her work in the Southern Hemisphere will include her monumental chalkboard drawings and designs for the acclaimed *The Dante Project* for the Royal Ballet. Part of the Sydney International Art Series 2023/2024.

### Exhibition: *Imants Tillers, The Mosman Years*

Mosman Art Gallery, 11 November to 4 February

### Warringah Printmakers Studio Annual Exhibition

15 to 26 November, 10am to 4pm.

Creative Space, 105 Abbott Road, North Curl Curl

## A Warm Welcome to Our New Members

Mary Turner  
Rafiqur Khan

## EN PLEIN AIR

Led by Jonathan Falk, the group meets twice a month from 10am to around 12pm. Just turn up! **Tuesday 14 and Thursday 30 November** Harnett Park, Mosman Bay, followed by the end of year lunch. No meetings in December or January.

## FRENCHY'S SECOND TUESDAYS

Coffee, arty conversation, show and tell, and maybe some sketching, every second Tuesday of the month, 10am at Frenchy's Cafe, Headland Park, Mosman. Look for the table with the pot plant. Save these dates: 14 November, 12 December, 9 January

## SOCIAL MEDIA

Add your artwork and bio info to the Artists' Gallery on our website [www.mosmanartsociety.org.au](http://www.mosmanartsociety.org.au)  
Visit us on Instagram @mosmanartsocietyinc  
Contact [secretary@mosmanartsociety.org.au](mailto:secretary@mosmanartsociety.org.au) to come on board

## MAS COMMITTEE

**Patron:** Paul Delprat

**President:** Anne Woodham

**Vice-President:** Margaret Crane

**Secretary/Treasurer:** Lindie Treleaven

**Committee Members:**

Isabel Gaven

Linda Gold

Frances (Shar) Jones

Kate Rae

## Mosman Art Society

PO Box 343, Spit Junction, NSW 2088

Email: [secretary@mosmanartsociety.org.au](mailto:secretary@mosmanartsociety.org.au)

[www.mosmanartsociety.org.au](http://www.mosmanartsociety.org.au)